

Yale SCHOOL OF THE ENVIRONMENT

# IMPACTS

2021 ANNUAL REPORT



# Knowledge and leadership for a sustainable future



“Impacts” represents a chance for us to review the year, the accomplishments of our students, faculty, and alumni, and our progress toward our strategic aspirations. Even with the difficulties associated with an entire year marked by the pandemic, our School rose to the challenges, bringing knowledge and leadership to bear on critical issues at local to international scales.

The big news this year is the establishment of a new Yale Center for Natural Carbon Capture, made possible by a major donation from FedEx. This new Center spans Yale and builds on the YSE tradition of solutions-focused science and the substantial expertise in our Forest School. In coming years, it will support two new faculty members for YSE and several doctoral students, and once additional funds are raised, it will enable new path-breaking research in carbon-sequestering plastics, fuels, building materials, and other technological innovations.

Despite global unemployment challenges, our 2021 graduates are successfully landing jobs in environmental fields and entering doctoral programs. They have obtained leadership roles in the non-profit, business, academic, and government sectors across the U.S. and in India, Malaysia, Germany, Singapore, Mexico, Columbia, the Netherlands, China, Myanmar, Rwanda, and Uganda.

With your support, we have successfully advanced our initiative in environmental communications, bringing environmental scholarship to the public and to policy, with Anthony Leiserowitz (Yale Program on Climate Change Communication) just recognized as the second most influential climate scientist in the world – No. 1 in the U.S. – by Reuters. Ideas from our Yale Environmental Dialogue initiative and book, “A Better Planet,” and from papers written by Professor Matthew Kotchen are part of the national policy conversation. Our alumni and faculty have led in environmental roles in every U.S. administration in the last 30 years, and this year is no different: at least four alumni and one faculty member have just undertaken key leadership roles in environment and energy offices.

In the coming year, we will be focusing on three key goals: building our urban initiatives, building our environmental data science initiative, and increasing scholarship support for master’s students, so that any qualified student who is accepted can feel comfortable matriculating without fear of crippling debt. Stay tuned as we work on achieving these goals, and stay safe!



Indy Burke, *Carl W. Knobloch, Jr. Dean*



Nyeema Harris (left) and Luke Sanford (right) joined the YSE faculty July 1.

## New YSE Faculty Bring Wildlife and Environmental Politics Expertise

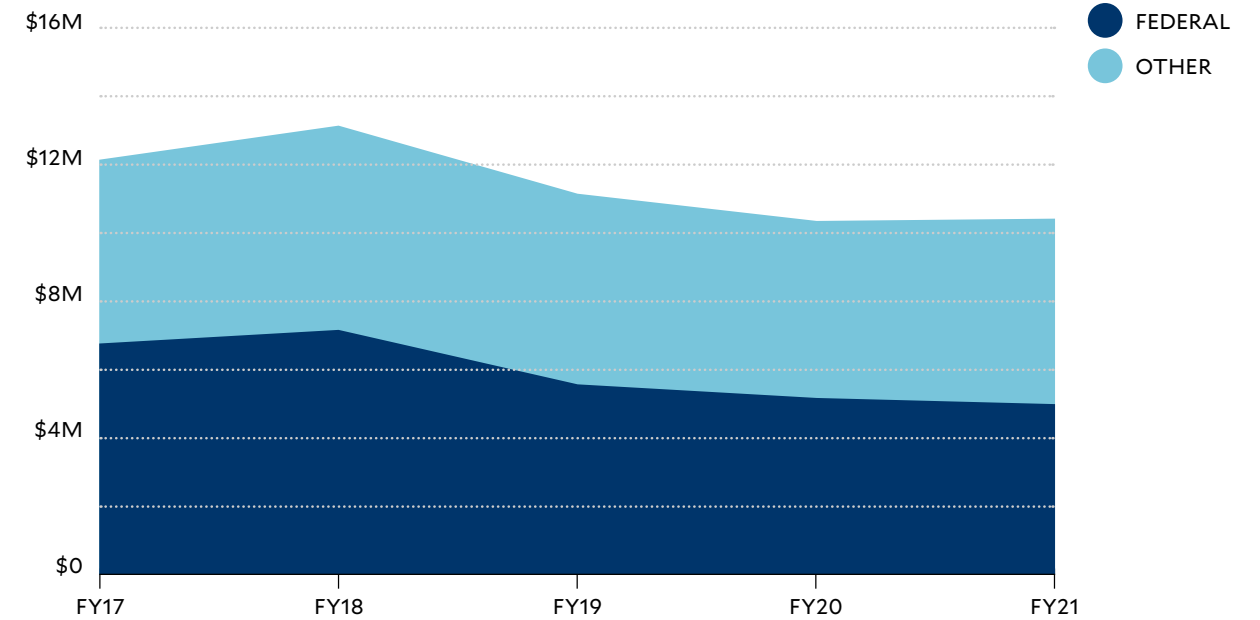
Nyeema Harris, whose groundbreaking research explores carnivore behavior and movement, and Luke Sanford, whose work focuses on the interplay between natural resources and political decisions, have joined the Yale School of the Environment faculty. Harris is an interdisciplinary scholar whose work focuses on ecology and conservation in urban systems and national parks at a global scale with ongoing projects throughout the Americas and Africa. Her position as associate professor of wildlife and land conservation was created with generous support from the Knobloch Family Foundation. She has been awarded a Fulbright to study tiger ecology and conservation in Asia.

Harris’s research focuses on the myriad of nature’s antagonisms, including parasitism, competition, human-wildlife conflict, and predation. Specifically, she critically

examines spatial and temporal variations in species interactions, how interactive networks are structured, and the ecological consequences of species loss and land-use change.

Sanford’s research examines environmental stewardship from a political science perspective. He has created methods for integrating data sources, such as satellite imagery, into causal inference frameworks in his study of environmental politics. An assistant professor of environmental policy and governance, Sanford has designed a simulation in which he will assign YSE students the names of real-life political leaders and environmental advocates to portray when negotiating climate and natural resource policy. One area Sanford will be researching further is the interplay between how countries elect political leaders and the conservation or exploitation of forests and natural resources.

GRANT & CONTRACT INCOME, 5-YEAR TREND



## Leiserowitz No. 2 on Reuters Global Climate Hot List

For over a decade Anthony Leiserowitz, the founder and director of the Yale Program on Climate Change Communication (YPCCC), has been at the forefront of climate perceptions research. This past spring he was recognized by Reuters for his groundbreaking work.

The Reuters “Hot List,” which ranks the world’s most influential climate scientists, placed Leiserowitz second out of 1,000 (No. 1 in the U.S.). Reuters based the rankings on three criteria: number of research papers published on topics related to climate change; how often those papers are cited by scientists; and how often the work is referenced in the media and policy papers.

Leiserowitz has published over 200 academic articles, chapters, and reports. He is the host of YPCCC’s “Climate Connections,” a daily radio program broadcast on over 600 stations nationwide. YPCCC’s biyearly report, “Climate Change in the American Mind,” is regularly cited in major publications.

## YSE Professor Appointed to White House Team

Eli Fenichel, Knobloch Family Professor of Natural Resource Economics at YSE, is on leave serving as assistant director for natural resource economics and accounting in the White House Office of Science and Technology Policy (OSTP).

Fenichel, an expert on natural capital, studies the interactions between ecological and human systems to develop economic theory related to environmental management. His focus is on how people allocate natural resources and consider natural resource risks through time.

In June, he joined OSTP, which advises the president on the scientific, engineering, and technological aspects of the environment, economy, security, health, and foreign relations.

“The concern over the world’s natural resources is growing,” Carl W. Knobloch, Jr. Dean Indy Burke said of Fenichel’s appointment. “We need experts who understand the complexities involved to inform and develop effective policy.”



DeNeile Cooper '22 MEM moderates a forum at Wagner Houses in NYC to help boost recycling efforts in public housing.

MARK CONRAD

## Waste Warrior

More than 500,000 people live in public housing units provided and managed by the New York City Public Housing Authority (NYCHA), but NYCHA recycles only 1.5% of its waste. Nationally, that rate is 32%. DeNeile Cooper '22 MEM is working to change that.

As a member of the Manhattan Solid Waste Advisory Board, she established a committee to support recycling efforts at NYCHA.

This past summer, Cooper's committee hosted a community forum highlighting NYCHA's waste management action plan, its sustainability agenda, and its new collaborative pilot project that began July 30 with local grassroots organizations to increase recycling rates and residential involvement.

As part of its efforts, NYCHA is working with the Inner City Green Team to bring recycling to its residents. The team goes door-to-door to collect recycling from residents.

"This work has been successful so far," Cooper says, "because it involves a variety of stakeholders who bring their unique perspectives to create programs that work for everyone."

## Spicing up Trail Foods in Sustainable Ways

Tony Cisneros '21 MEM/MBA was hiking in Colorado and feeling pretty uninspired by the food options he had with him. That's when an idea hit him.

And now that idea is ready to reach consumers in the form of Mesa Foods, a company he runs with partner Caroline Ebinger '22 MEM/MBA. The students received YSE's Center for Business and the Environment (CBEY) Climate Innovation Grant and funding from Yale's Tsai Center for Innovative Thinking to help fund the startup.

Mesa promotes an earth-friendly lifestyle selling nutritious, sustainable food products that can be consumed on the go. Its core values are supporting sustainable farmers and food suppliers who are practicing planetary health principles.

"Tony and Caroline are great models for how to think and act in building a business," says Stuart DeCew, CBEY executive director.

**823** potential master's degree students applied to YSE in 2021, the largest number of student applications in its history

## Mapping Positive Change in Panama

Using satellite imagery of farmlands, Cecilia Rogers '22 MFS is mapping the success of YSE's Environmental Leadership Training Initiative (ELTI) program in Panama that helps cattle ranchers incorporate sustainable practices, such as the use of forested pastureland, into their land management.

As a researcher for ELTI, an initiative of The Forest School at YSE that trains people to protect tropical forests globally, Rogers worked with Anna Raffeld '21 MEM, analyzing eight farms over a 10-year period. They found that the amount of sustainably managed land had significantly increased.

In 2011, only 4% of the land on the eight farms was sustainable. By 2020, the amount of sustainable farmland had grown to 66%.

"This is the first data that proves that these land use practices are effective," Rogers says. "It's been very rewarding working on this interdisciplinary project."



Image including cover: Alaska Longline Fishermen's Association Executive Director Linda Behnken '90 MESC, who promotes sustainable fishing practices, unloads yelloweye rockfish, whose catch is limited to maintain healthy populations.

DAN EVANS WWW.ALASKADANEVANS.COM

### Holding the Line for Sustainable Fishing

Linda Behnken '90 MESC went to Alaska – what she calls the “ultimate wild place” – in 1982, hoping to earn a living using sustainable fishing practices. Since then, she has devoted herself to making sure the livelihoods of independent fishermen are sustained as well.

As Executive Director of the Alaska Longline Fishermen's Association, Behnken, who lives in Sitka, has advocated for state and national policies to protect community-based fisheries and habitats, providing resources locally to promote best fishing practices, and addressing climate change.

Her efforts earned her a Heinz Award in 2020 for her “advocacy work to promote sustainable fishing practices and drive conservation policy while supporting the rural fishing communities of Alaska that rely on the ocean for their livelihood and way of life.”

“It's really important to know how your fish was caught when you buy fish in the market,” Behnken says. “We want to help people understand there are people fishing in sustainable ways.”

### Uniting Voices to Safeguard the Planet

Shortly after graduating from YSE, Humna Sharif '21 MEM took on the formidable job of uniting a collective of organizations involved in ocean advocacy.

As government relations manager for the National Ocean Protection Coalition (NOPC), Sharif is working toward three main goals: equitable access to nature, protecting 30% of the oceans by 2030, and safeguarding national marine monuments.

“We all want to help the planet and have healthy oceans, and each organization approaches it differently,” says Sharif. “I think the impact comes when we bring together all those voices and present a united front.”

Sharif says her generation is bringing an urgency to the issue of climate change.

“I keep reminding people that it's important to hammer ahead and be super ambitious,” she says. “We cannot relent.”

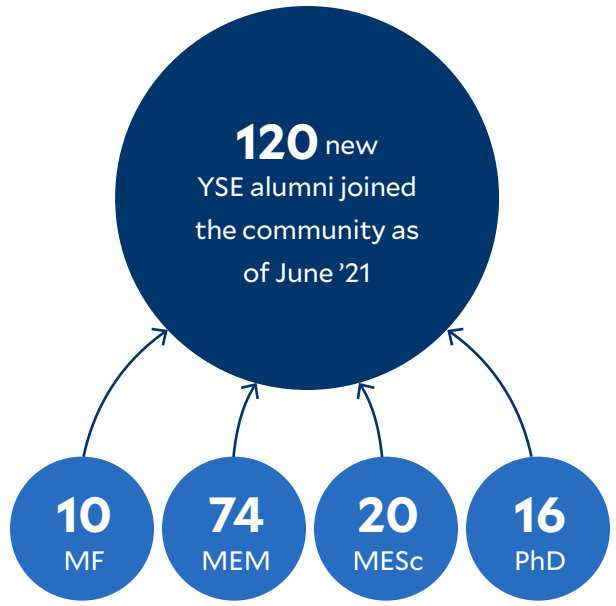
### Insights from the Night Sky

When a powerful ice storm hit Texas last winter knocking out much of the state's power grid, Eleanor Stokes '18 PhD was able to help map vulnerable communities through her work as co-leader of Black Marble, NASA's first nighttime light dataset.

Using data from the Visible Infrared Imaging Radiometer Suite aboard NASA's Suomi NPP satellite spacecraft, Stokes was able to pinpoint communities in need of help from FEMA and other relief organizations to inform boots-on-the ground operations.

Her novel use of nighttime light imagery is providing insights on human settlements and the environment.

“Humanity is facing major global risks right now from extreme weather and rising sea levels,” she says. “It's very important to have a satellite record that can speak to the human piece of the puzzle.”





Professor Yuan Yao (second from left) and postdoctoral researchers from the Center for Industrial Ecology discuss the use of sustainable wood products.

CLOE POISSON

**9,747** trees have been planted by YSE's Urban Resources Initiative in New Haven through its Green Jobs program, Greenspace volunteers, and YSE volunteers

**244** participants from **38** countries joined YSE's online certificate programs in the 2021-22 academic year



Students in Mark Ashton's silviculture class planted trees in Edgerton Park in New Haven. A total of 20 trees were planted by URI in the park this past spring.

CLOE POISSON

## Turning Wood into Bioplastics

A year into joining the Center for Industrial Ecology faculty at YSE, Yuan Yao, working with her research team, had a breakthrough in her efforts to take on one of the world's largest polluters: plastic. Yao, assistant professor of industrial ecology and sustainable systems, helped create a high-quality bioplastic from wood.

"We've minimized all of the materials and the waste going into nature," says Yao.

The materials show a high mechanical strength, stability, and UV-light resistance and can be recycled or safely biodegraded in a natural environment with a lower life-cycle environmental impact when compared to petroleum-based plastics and other biodegradable plastics.

Yao is continuing the research with her team and a forest ecologist to create forest simulation models that link the growth cycle of forests with the manufacturing process.

## Engaging Faith Voters on Climate Change

Most American voters of faith not only know that climate change is happening, but they also want their elected officials to support policies that combat it, according to Yale Program on Climate Change Communication (YPCCC) surveys and research. Yet, many alarmed Americans do not always vote.

YPCCC's Partnerships Program is changing that by partnering with Interfaith Power & Light (IPL), a nonprofit that mobilizes people of faith to take bold climate action. One initiative included providing IPL's campaign with technical support, strategic advice, and helping it identify infrequent voters of faith concerned about the climate who received texts. There was a 1.7 percentage point increase in voter turnout due to the IPL texting campaign, with an estimated 1,455 additional people voting.

The efforts are just one example of how YPCCC is helping to expand the climate movement.

## JEDSI Puts Justice and Diversity Front and Center

Dr. Dorceta Taylor '85 MFS, '91 PhD, who was named the School's first Senior Associate Dean of Diversity, Equity, and Inclusion, has launched the new Justice, Equity, Diversity, and Sustainability Initiative (JEDSI) at YSE.

The initiative examines the relationship among social inequalities, lived experiences, and environmental outcomes. To this end, JEDSI is currently focusing on six primary areas of research, teaching, and practice. It focuses on environmental history; nature and outdoor experiences and attitudes; environmental disparities and inequality; food and farming access and justice; institutional diversity; and building diversity pathway programs.

In April, nearly 900 people from around the world participated in JEDSI's New Horizons in Conservation

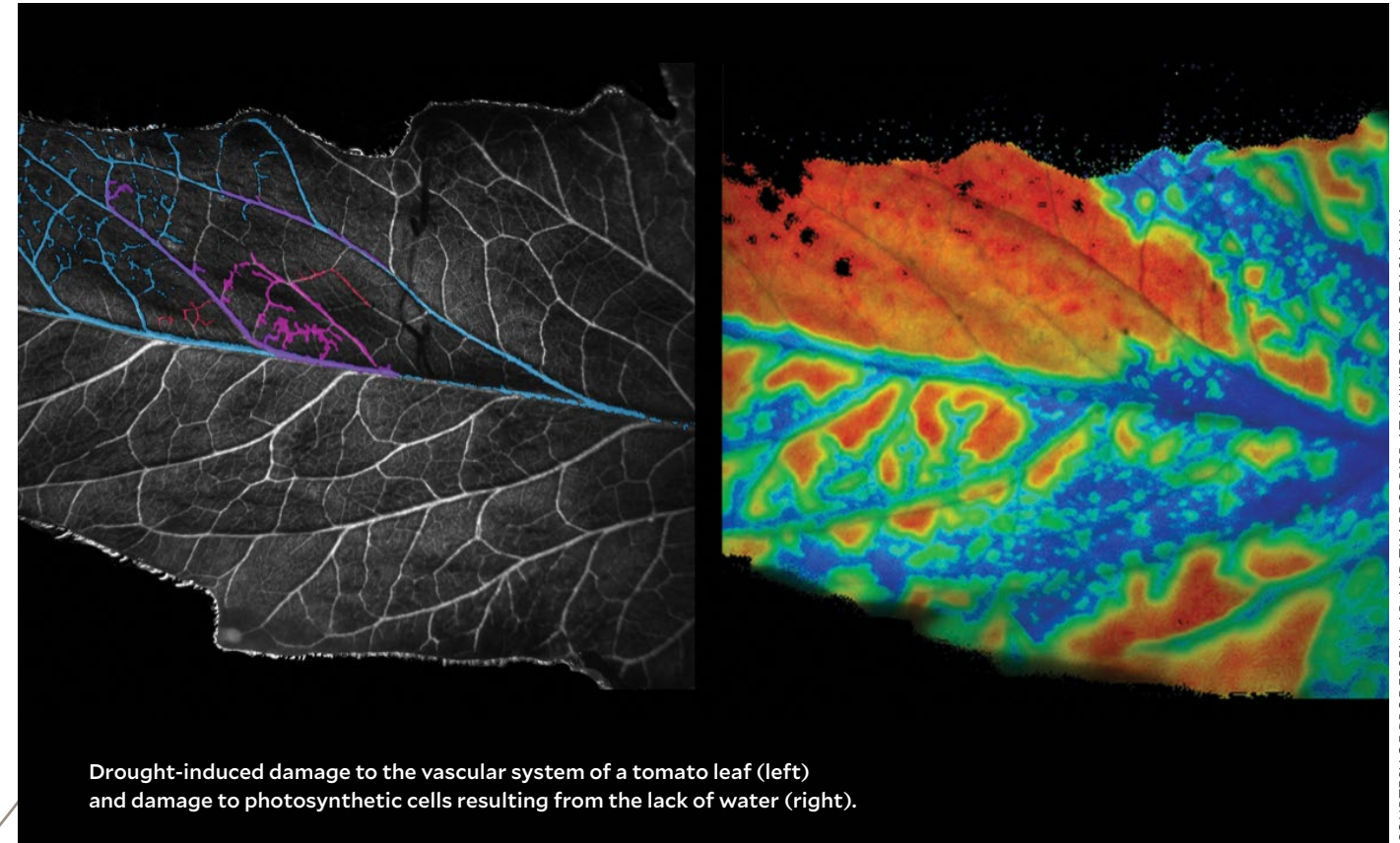
Conference, which draws early-career professionals who are historically underrepresented in the environmental field as well as those committed to diversity, equity, and inclusion.

"Environmental racism and discrimination are rampant in the U.S. and around the world," Taylor says. "We hope to inspire a new generation of thinkers and leaders to build sustainable futures for all by identifying and dismantling structures and practices that foster inequities."

Taylor's watershed 2014 study on the state of diversity in nearly 200 U.S. environmental organizations brought into focus the staggering lack of people of color in the field.

# Continuing the momentum

The Yale School of the Environment continues to build on its legacy of knowledge and leadership for a sustainable future and work toward the ambitious goals set out in its 2017 Strategic Plan through its scholarship, teaching, and practice.



Drought-induced damage to the vascular system of a tomato leaf (left) and damage to photosynthetic cells resulting from the lack of water (right).

COURTESY OF BRODERSEN LAB AND TIM BRODRIBB AT UNIVERSITY OF TASMANIA

## GOAL: Develop areas of emerging strength

- ✓ Jonas Meckling, of U.C. Berkeley, and A. Scott Denning, of Colorado State University, were appointed as visiting faculty through the Coleman P. Burke Distinguished Visiting Professorship Fund. Meckling, who will serve a year, and Denning, who will serve until December, will teach courses on climate change, provide public lectures, and engage with the climate change science and solutions learning community.
- ✓ Launched the Environmental Data Science Accelerator Fund with a \$500,000 gift. With increased data manipulation and cloud computing capacity, faculty will be able to increase the efficiency of their big data research and the speed at which they are able to reach conclusions, accelerating the uptake of YSE research into policymaking.

## GOAL: Build on historic strengths through research, training, programs, and initiatives

- ✓ Professor of Plant Physiological Ecology Craig Brodersen is leading pioneering research to optimize plants' ability to absorb and store carbon to fight climate change. The work, in collaboration with the Salk Institute's Harnessing Plants Initiative, focuses on carbon storage in sequestering tissues, drought tolerance, and improving photosynthetic performance.
- ✓ Yale Center for Environmental Law and Policy (YCELP) helped launch the Zero Carbon Action Plan, which comprehensively lays out a realistic path to nationwide decarbonization. Since its release, the Center has promoted its findings, participated in expert workshops to further refine its recommendations, and conducted briefings for high-ranking policymakers.

## GOAL: Create and revise curricula that align with strategic priorities

- ✓ Added a new course on data visualization and communication using evidence-based design principles and cutting-edge software tools to develop graphics using diverse datasets.
- ✓ Introduced a new course, "Decarbonization Pathways to Limit Climate Change," examining the scale of the climate problem and pathways to achieve net-zero emissions. The course examines the necessary scale of emissions cuts and investigates countries' commitments to strengthen global response.

## GOAL: Build and maintain our leadership on issues of national and international importance

- ✓ Professor of Tropical Forest Ecology Liza Comita was named co-director of the new Yale Center for Natural Carbon Capture, which was launched with a \$100 million gift from FedEx. The center, which is part of the University's Planetary Solutions project, will develop a portfolio of natural carbon sequestration strategies.
- ✓ Knobloch Family Professor of Natural Resource Economics Eli Fenichel — on leave from the faculty at YSE — joined the White House Office of Science and Technology Policy. Economics Professor Matthew Kotchen's research into fossil fuel subsidies was cited in the Biden Administration's "Made in America Tax Plan" in a section noting that tax preferences for oil, gas, and coal producers shift energy production away from cleaner alternatives.

**35%** of incoming doctoral students were people of color, the highest number ever in YSE's history

Nearly **900** people attended the New Horizons conference, which celebrated the work of people of color across the fields of environmentalism and conservation

**GOAL:** Diversify our faculty, student body, and staff to better address the complex challenges of the future

**GOAL:** Create and support new interdisciplinary scholarship, teaching, and outreach

- ✓ Appointed Dr. Dorceta Taylor '85 MFS, '91 PhD as the first Senior Associate Dean of Diversity, Equity, and Inclusion to lead the school's DEI efforts. Dr. Thomas Easley, the School's first Assistant Dean of Community and Inclusion, who served through June 2021, helped initiate a pedagogy seminar series on race. The School has increased diversity among students through direct outreach and the creation of hiring guidelines, among other initiatives.
- ✓ Created the Center for Environmental Justice under the direction of Environmental Justice Professor Gerald Torres, an acclaimed global scholar of environmental law, critical race theory, and federal Indian law. Torres holds a joint faculty appointment at Yale Law School.

- ✓ Began an interdisciplinary initiative with The Forest School, the Center for Industrial Ecology, and the School of Architecture exploring the carbon benefits of biogenic building materials in urban areas through joint conferences with The Forests Dialogue and Hixon Center for Urban Ecology, new courses, and research.
- ✓ Created a new interdisciplinary research initiative within the Environmental Leadership and Training Initiative's Panama landscape as part of a research project supported by the Childs Family Forest Fund. The project examines the ecological results of the model farm network that ELTI established with landholders in Panama's Azuero Peninsula.

# Help us continue the momentum

Your support will enable us to add further breadth and depth to our record of excellence and leadership of environmental efforts across the University.

## SOME OF OUR GOALS IN THE NEAR FUTURE:

- Develop resources for new programs and professorships:
  - urban systems and environmental justice
  - environmental data
  - environmental leadership
  - climate change mitigation, communication, and policy
- Increase scholarship support for master's students of all backgrounds
- Raise funds to create new professorships and boost faculty recruitment for inclusive excellence
- Expand the doctoral program to broaden our research impact and scholarly influence

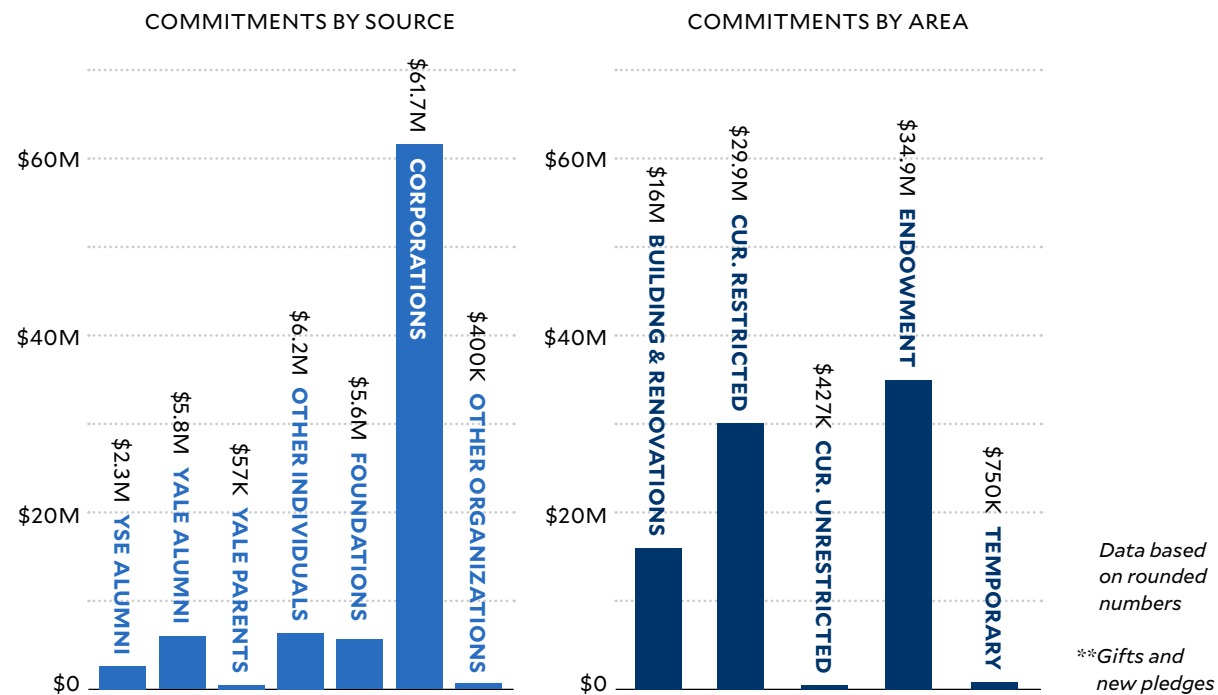


# Financial Highlights

FY21 was a record fundraising year, thanks to a landmark \$100M gift from FedEx, of which YSE received \$60M. In looking at the graphs below and opposite, important notes to consider are:

- The entire \$60M from FedEx is restricted to the mission of the Center for Natural Carbon Capture and cannot be repurposed for other needs
- Additionally, the majority of YSE's endowed funds (scholarships, professorships, etc.) are similarly restricted
- Although the School's endowment is managed as part of the greater Yale University endowment, we are a self-supporting school within the University, and in fact, we pay Yale each year for our share of central services such as the library, fire and police protection, etc., through the University Services Assessment (14% of the School's expenses on the chart at right)

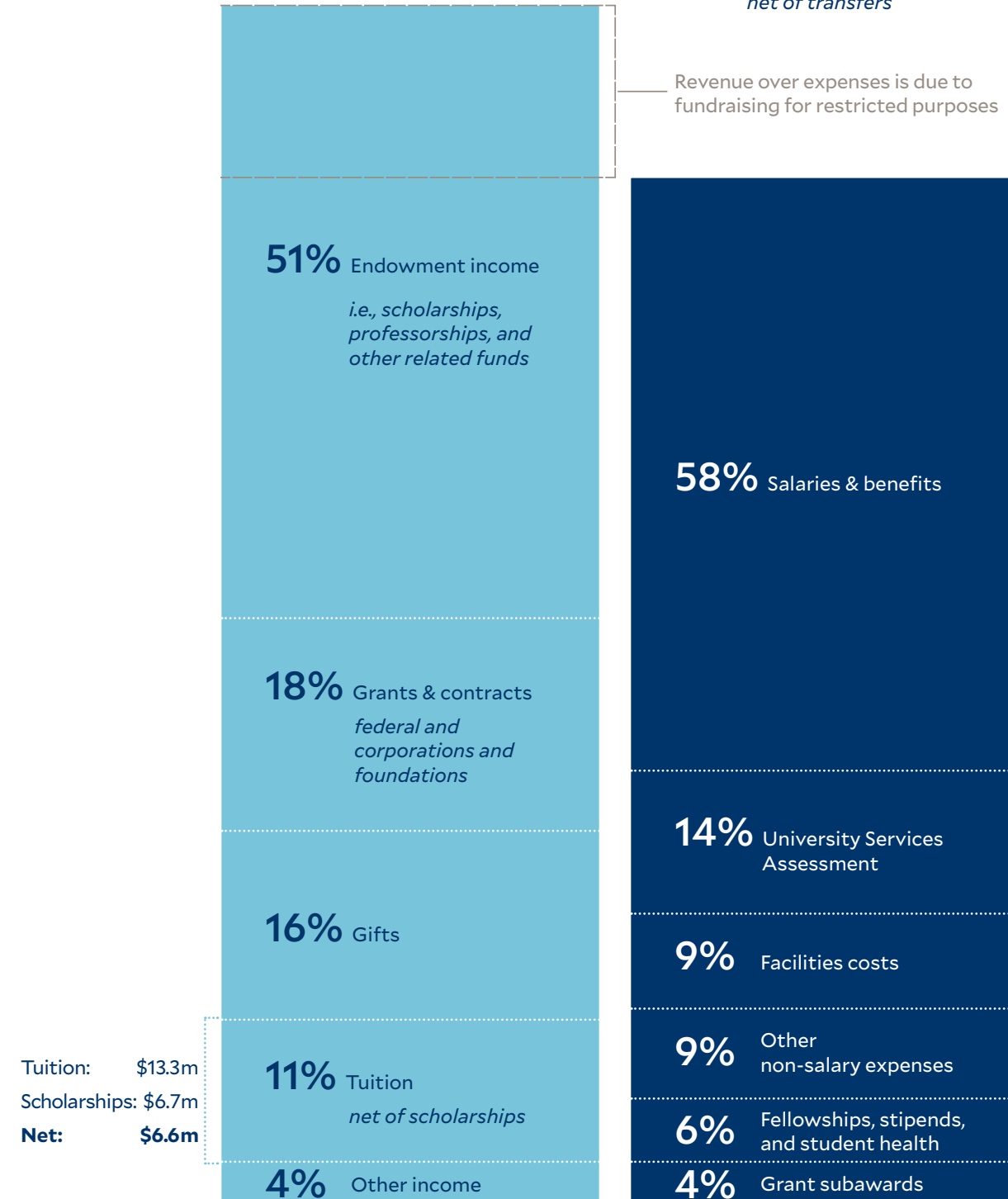
## FY21 COMMITMENTS\*\* = \$82,009,407



**\$58.8m**  
FY21 REVENUE

**\$50.4m**  
FY21 EXPENSES  
*net of transfers*

Revenue over expenses is due to fundraising for restricted purposes



# Gifts to YSE create a foundation upon which our entire school is built.

Because of your generosity, our faculty can conduct groundbreaking research; our students can take advantage of life-altering internships; and our alumni can pursue careers that provide solutions to the world's most pressing environmental challenges. We can continue to bolster our historic strength in research and education while building an ambitious and innovative path to a sustainable future. Each dollar makes a difference. Help us continue the momentum created by an incredible year of successes — made possible through gifts from alumni and friends — by donating to YSE today. Go to [environment.yale.edu/giving](https://environment.yale.edu/giving) or use the attached envelope to make your gift!

Contact the Office of Development and Alumni Services at [dev.alumni.yse@yale.edu](mailto:dev.alumni.yse@yale.edu) or at 203-432-9958.



## THE POWER OF THE YSE ANNUAL FUND

IN FY21, THE YSE ANNUAL FUND COLLECTED

# 921

GIFTS THAT WERE IMMEDIATELY SPENDABLE, TOTALING

# \$388,855

WHICH AMOUNTED TO

# 103.7%

OF OUR GOAL (THANK YOU!)

20% of all alumni made a gift in FY21. Using last year's averages, if all alumni made a contribution, YSE could have raised almost \$2 million. Your gifts really do make a huge difference!

# Investments of time, energy, and counsel make a big difference.

The alumni and friends who volunteer on our boards play a critical role in shaping the Yale School of the Environment for future generations and set an inspiring example for members of the YSE community. We thank all of them for their service and commitment to our School.

## YSE ALUMNI ASSOCIATION BOARD

### Elected and Appointed Members:

- James Albis '16 MEM
- Saleem H. Ali '96 MES
- Terry Baker '07 MF
- Gary Barrett '96 MF
- Jaime Carlson '09 MEM/MBA
- Paloma Caro '16 MEM
- Ben Christensen '20 MEM
- Sue Ely '07 MESc
- Alex J. Finkral '97 MF, '05 PhD
- Genora Givens '18 MEM
- Shafqat Hussain '02 MEM, '05 MPhil, '09 PhD
- Grace Kankindi '16 MEM
- Cilla Kellert '74 BA, '81 MFS
- Luisa Lema Velez '06 MEM
- Jessica Leung '17 MEM
- Michelle Lewis '13 MESc/MDiv

- Cathy McConnell '85 MFS
- Hallie Metzger '65 MAT, '75 MFS
- Tara Meyer '15 MESc
- Phil Rigdon '02 MF
- Monica Nunez Salas '18 MEM
- Toral Patel-Weynand '92 MFS, '01 DFES
- Anne Peters '76 MFS
- Morgan Pierce '20 MEM
- Maclovia Quintana '11 BA, '14 MESc
- Mona Wang '13 MEM

### Student Representatives:

- Aymane Eddahmani '21 MESc
- Lav Kanoi, Doctoral Student
- Ali Wisner '23 MEM

### Ex-Officio Members:

- Dr. Indy Burke
- Carl W. Knobloch, Jr. Dean

Kristin Floyd '01 BA  
*Associate Dean, Development & Alumni Services*

Gordon Geballe '75 MS, '81 PhD  
*Associate Dean for Student International Engagement*

### Faculty Representatives:

- Mark Ashton '85 MF, '90 PhD
- John Wargo '84 PhD

### Staff Representative:

- Sara Smiley Smith '07 MESc/MPH, '16 PhD

### International Alumni Association Board Liaisons:

- Saima Baig '06 MEM
- Sabrina Szeto '16 MF
- Leandro Vigna '19 MEM

● Member of the Executive Committee  
 ● Delegate to the Yale Alumni Association Assembly  
 ● Term begins October 2021  
 ● Term ends 2021

## YSE LEADERSHIP COUNCIL

- Robert W. Ackerman '60 BS
- Calvert J. Armbrrecht
- Edward C. Armbrrecht, Jr. '54 BA
- Vicki Assevero '73 BA
- Susan M. Babcock '83 MES
- Edward P. Bass '67 BS
- Spencer B. Beebe '74 MFS
- Frances Beinecke '71 BA, '74 MFS
- Forrest C. Berkley '76 BA
- Peter A. Bradford, Esq. '64 BA, '68 LLB
- Mark A. Broach '83 BA
- Barbara Brown, PhD
- Christina L. Brown
- ♦Coleman P. Burke '63 BA
- Josephine Bush
- David A. Campbell '90 BA
- \*Donald T. Chen '89 BA, '92 MES
- \*\*\*Starling W. Childs, II '76 BS, '80 MFS
- \*Brandi A. Colander '07 MEM
- Peter B. Cooper, Esq. '60 BA, '64 LLB, '65 MUS
- Christopher A. di Bonaventura '77 BA
- Ellen N. di Bonaventura
- Ceara G. Donnelley, Esq. '04 BA, '09 JD
- John E. Earhart '85 MF
- \*Christopher J. Elliman '75 BA
- William B. Ellis
- Thomas K. Emmons '69 BA
- Frederick V. Ernst '60 BA
- Howell L. Ferguson '66 BA
- George T. Frampton, Jr. '65 BA

- Timothy Clarke Fritzingler '93 BA, '99 MF, '99 MBA
- Victor L. Gonzalez '77 MFS
- Gerald Grinstein '54 BA
- Evan Griswold '75 MFS
- \*Leah K. Hair '74 MFS
- Rose H. Harvey '84 MES
- \*Liliane A. Haub
- André T. Heinz '99 MES
- Dylan H. Hixon '88 BS
- Sherry Huber
- Redmond S. Ingalls '98 BA
- \*J. Heinrich Jessen '95 MEM
- Jesse D. Johnson '01 MEM, '01 MBA
- M. Albin Jubitz, Jr. '66 BS
- Yolanda Kakabadse
- Martin Kaplan
- Randall M. Katz '79 BA
- Scott M. Kline '85 BA
- \*Pamela Kohlberg '75 BA, '77 MFS
- Richard E. Kroon '64 BA
- Frederic D. Krupp '75 BS
- \*James Leitner '75 BA
- Robert Liberman '65 BA
- Thomas E. Lovejoy '64 BS, '71 PhD
- Claudia Martinez Zuleta '89 MES, '89 MA
- Donald F. McCluskey '42 BE, '59 MEng
- Alan R. McFarland, Esq. '64 BA, '67 LLB
- \*\*Thomas McHenry '77 BA, '80 MFS
- Roger D. Mellem, Esq. '80 MSL
- Preston J. Miller '71 BA

- \*\*Mary Moran
- Caroline P. Niemczyk '77 BA
- Marne Obernauer, Jr. '65 BA
- Gilman Ordway '47 BA
- Dan Perlman '80 BA
- \*William K. Reilly '62 BA
- Jonathan F. P. Rose '74 BA
- Heather L. Ross
- Andrew E. Sabin
- V. Alaric Sample '80 MF, '88 MBA, '89 DFor
- Todd C. Sandoz '93 BA
- Christopher G. Sawyer '75 MDiv
- Ralph C. Schmidt '69 BA, '78 MFS
- Peter A. Seligmann '74 MFS
- Martin L. Senzel, Esq. '66 BA, '69 LLB
- \*David A. Sobotka '78 BA
- G. Wade Staniar '64 MF
- Edward L. Strohbehn, Jr., Esq. '62 BA, '63 BE, '66 MA, '69 LLB
- Ellen Susman
- Oakleigh Thorne II '51 BS, '53 MS
- Frederick J. Weyerhaeuser '77 BS, '83 MFS
- Joseph H. Williams '56 BA
- Adam R. Wolfensohn '02 MEM

\* Member, Steering Committee  
 \*\* Co-chair, Steering Committee  
 \*\*\* Chair, YSE Annual Fund  
 ♦ Deceased during 2019–20 academic year





John Bradford	Laura Cotterman	Andrew J. Friedland	Redmond S. Ingalls	Matthew J. LeBlanc	Lisa Neshyba	Dennis J. Riordan	Fred J. Stanback	Bill Wilson	<b>Corporations, Foundations, and Organizations</b>	Anonymous (2)	High Tide Foundation
Mark A. Bradford	Teresa E. Cowdrey	Stephen Frost	John L. Jayne	Sabrina R. LeBlanc	Joseph F. Neussendorfer	Elihu F. Robertson	Steven Stec	Jennifer Winch		11th Hour Project	Ibá-Industria Brasileira de Árvores
Angelica Braestrup	Anne S. Crawley	Jay Fuss	Holly Jensen	Jenny Lee	Howard H. Newman	Eric Lee Robinson	Todd D. Stern	Timothy E. Wirth	Adventure Scientists	Iberdrola S.A.	
Charles M. Brennan	Thomas Crider	Christina Gabetti	Michael Jensen Sembos	Tony D. Lee	Caroline P. Niemczyk	Gary Roloson	Eugene Stetson	John Wise	Anacostia Watershed Society	International Union for	
Peter Brennan	Alexander	MaryCarol Galvin	Ellen Jewett	James Leitner	Hilary A. Noonan	Jonathan F. P. Rose	Mary Stevens Ovecoglu	Aimee B. Wolfson	Andrew Sabin Family Foundation	the Conservation of Nature	
J. Alan Brewster	Crits-Christoph	Calvin Gander	A. Bryan Johnson	Eric Johnson	Marne Obernauer	David S. Ross	Joan Stiles	Andrea J. Wood	Animal Welfare Institute	Robert Wood Johnson Foundation	
Antoinette Broadhead	Lisa Dahill	Matthew Garrett	Eric Johnson	Brian Lestini	William O'Connor	Heather L. Ross	Claire Stilwell	Gina Woodward	Aramco Services Company	Klabin	
Linda K. Broker	Wendy Dann	Nina Garrett	Samuel Johnson	Robert Liberman	Donald A. Offinger	Lydia Ross	Thomas Kenneth Stipanov	Stephanie Woods	Arcadia	Land Trust Alliance	
Herb Brown	Thomas F. Darden	Eric Johnson	Eric Johnston	Susan Limouze	Robert G. Oliver	Michael Roux	Eleanor C. Stokes	Margaret Wooldridge	BAND Foundation	Richard Lounsbury Foundation	
Martin S. Brown	Bruce L. Dasinger	Thomas Gearing	Veronica Johnston	Robert Lindsley	Joan O'Neill	Marshall S. Ruben	Stora E. Oyj	Hugh Wright	Bay & Paul Foundations	The John D. &	
Teresa Brown	Jonathan Davie	Gordon Geballe	Darlene Jones	Lee Lines	Kathleen O'Neill	Patricia Ryan	Katherine Straub	Pei-Tse Wu	BNY Mellon	Catherine T. MacArthur Foundation	
Henry Bruner	Melanie Davies	Shelley Geballe	Gwundaf Jones	Lawrence M. Lipsher	Thomas J. Opaladen	Andrew Sabin	Zoe Strecker	Zhemin Xuan	BTG Pactual Timberland	MassDEP Commissioner's Office	
Morton K. Brussel	Chandler R. Dawson	Marcia D. Gens	Vince Joyal	Silas Little	Matthew O'Rourke	Andrew Sabin	Edward L. Strohbehn	Ruslan Yablonsky	Investment Group	McCall MacBain Foundation	
Bernard Buchholz	Mark T. DeAngelis	Bradford Gentry	Annie Kaempfer	Sally Liu	Peter C. Otis	Paiping Sam	Julie Stromberg	Bill Yeates	Center for Applied Environmental	Fund for Nonprofit News	
Lynn M. Buckmaster	Joanne DeBernardo	Eugenie I. Gentry	Betty A. Kahn	L. Lopez Serrano	Allegra O. Pankratz	Douglas Savidge	Christina Styer	Kristina Jade Yee	Law and Policy	at The Miami Foundation	
Pierre Bulens	John de Golia	Christopher Getman	Harold Kalishman	David Paul Loseff	Jose Pauy	Christopher Glenn Sawyer	Pavan Sukhdev	Marc Zimmerman	Center for Large Landscape Conservation	Charles Stewart Mott Foundation	
Becky G. Bunnell	Charles Y. Deknatel	Julia Getzels	Harold Kalishman	Joshua Low	Ethan Payne	Charles Schaffer	Sami Sullivan	Aaron Zorndorf	Ceres	Natural Difference	
Patti Burchette	Merry De Leon Krueger	Kenneth Gillingham	Harold Kalishman	Fran Ludwig	Robert Perkowitz	Theodore Schatzki	Jil Swearigen		Charities Aid Foundation	Natural Resources Defense Council	
Coleman P. Burke ♦	Joseph Delfino	Aidan Glaser Schoff	Harold Kalishman	John McCall MacBain	Dan L. Perlman	David T. Schiff	Eric Taylor		Circle of Service Foundation	The Nature Conservancy	
Ingrid C. Burke	Christof	Christopher Godfrey	Randall M. Katz	Betty MacMillan	Marsha P. Peters	Olivia A. Schlaepfer	Jon Thompson		City of Ann Arbor	The Navigator Company	
Leslie Burlingame	Demont-Heinrich	Scott Goetz	Russell S. Katz	Eunice Mahler	Christopher Peterson	Robert J. Schloss	Pamela Thomson		Climate and Land Use Alliance	New York Community Trust	
Elliott Bush	Tom DeSpain	Susan H. Goldhor	Kathy M. Kauffman	Susan Mainwaring	Janet M. Petricone	Robert Schmidt	Stephen C. Thomson		ClimateWorks Foundation	Oceans5	
John W. Byrd	B. Reid Detchon	Jane Goldman	Benjamin Kelley	Mark Mallory	Veronica Petrik	William Schultz	Roger Tilden		The Community Foundation for	The Ohio Environmental Council	
David A. Campbell	Sven Dethlefs	Donald Goldstein	Thomas D. Kennedy	Robert Mann	Michel Phillips	Craig Schuttenberg	Sharon Tisher		Greater New Haven	Overhills Foundation	
William Cannon	Christopher A.	Gilbert Gott	Steven Kent	Isabel M. Mann	Fred E. Pittman	Fiona P. Schwab	Paul Tobias		Conservation Law Foundation	William Penn Foundation	
Anna Carlson	di Bonaventura	Christie Greene	Tony Kerr	John Marquis	Joan Pittman	Stephen H. Scolnik	Phyllis Tobias		Connecticut Land Conservation Council	Pratt & Whitney	
Sam W. Carmalt	Steve Dixon	Lois Greene	William Keydel	Victoria Mas	Veronique C. Pittman	Alexis Segal	Michael Toolan		Connecticut Forest & Park Association	Resources for the Future	
Faith Y. Carmichael	George Demartin	Forest Grey	Annelynne D. King	Robert Martin	John Plonski	Margaret J. Segal	Aaron Tumel		Dalberg Catalyist	Salazar Center for North	
Marifer C. Compean	Strachan Donnelley ♦	Jeremy Grantham	Frederick C. King	Steven Martin	Dorothy N. Polayes	Alan D. Seget	Melissa G. Vail		Doris Duke Charitable Foundation	American Conservation	
Stephen Carroll	Karen D'Orazio	Hannelore B. Grantham	William King	James Martin-Schramm	Karen Polk	Norman C. Selby	William Vance		The Ecology Center	Sappi Europe	
Daniel F. Case	Michael R. Dove	John Grim	Michael J. Kirby	Marshall A. Massey	Raymond K. Pottebaum	Stephanie M. Seller	Johanna Van Straaten		Ecosystem Services Market Consortium	Scholars for Conservation	
Mimi Casey	Randal Downer	Luis M. Guerra	William Kerschner	Glenn A. May	Ann Preston	Martin L. Senzel	Ava van Vliet		The Endeavor Foundation	Leadership Program	
Alan Cassidy	Tim Dunn	Ann Hallowell	Molly Kittleson	Seashore L. May	Ken Pucker	Nathan Shaffer	M. L. van Waardenburg		Energy Foundation	Smokey House Center	
Kathleen Castellon	Enid Storm Dwyer ♦	Marshall Hamilton	Nancy Klavans	Tim Mayer	Simon Queenborough	Kameron Shahid	Valerie C. Ventre-Hutton		Environmental Grantmakers Association	Stitching SED Fund	
Anthony Cavalieri	Edward Eagan	R. Scott Hanson	Carla Knobloch	Mary McAllister	Tom Quinn	Richard R. Shank	Magda T. Vergara		Environmental Research &	Stora Enso	
Robert Cerato	Gayle Eaglewoman	Amelia Hardin	Peter L. Knuepfer	Margaret K. McCarthy	Gregory A. Racznik	Richard R. Shank	Margaret Vernon		Education Fund	Edna Bailey Sussman Foundation	
Zoe Z. Chance	Thomas W. Earnhardt	John Harris	Amy Koch	Christopher McElroy	Martin A. Rader	Tzu Fann Shao	Kenneth P. Vickery		Environmental Law Institute	The Switzer Network	
Beth Chaney	Daniel C. Edelson	Richard Hart	Hannes Koenig	Joshua McHugh	Kenneth M. Raisler	Kathy Shimata	Susan N. Wagner		Federal Express Corporation	Terra Corps	
Larry G. Chang	Christopher J. Elliman	Thomas R. Harter	Catherine Koning	Subhash Mehta	D Raj Raman	Elizabeth	Mike Walker		Ford Foundation	Torrey Botanical Society	
Paul D. Chapman	Marcia Emerson	John Hartz	Daniel Koskovick	Roger D. Mellem	Alan B. Ranford	Sidamon-Eristoff	J.A. Walsh		Forestal Mininco	TTG Forestry Services	
Richard Hsiu-Tih Chow	Thomas K. Emmons	Sibyl Harwood	Matthew J. Kotchen	Vicky Meretsky	Edward R. Ranney	Randy Simon	Wallace Ward		Foundations of Success	UPM-Kymmene Oyj	
Keith Chrisman	Thomas K. Emmons	Sibyl Harwood	Matthew J. Kotchen	Vicky Meretsky	Edward R. Ranney	Coimbra Sirica	Ericka Warmack		Grantham Foundation for the	US Fish and Wildlife Service	
David S. C. Chu	Rachel Erickson Hee	Trent Hatfield	William W. Kunze	Benjamin Messer	Liz Rantz	David K. Skelly	Carole Warner		Protection of the Environment	The Wellcome Trust	
Christiane H. Citron	Frederick V. Ernst	Trent Hatfield	Ayako O. Kurihara	Thomas H. Milch	Edward R. Ranney	Michael R. Slater	Carole Warner		Global Wildfire Conservation	The Wilderness Society	
Gordon H. Clark	Daniel C. Esty	Pixie Haughwout	Henry Kwan	Kendrick Miller	Liz Rantz	Clifford L. Slayman	Dawn Watson		Gulah Geechee Chamber of Commerce	Wyman Family Fund of the New	
James H. Cullum Clark	Johnathan D. Falcone	Sandra Hausman	David H. Lockman	John Mills	Thomas H. Milch	Robert J. Small	William Weber		Hawaii Sea Grant	Hampshire Charitable Foundation	
Ian W. Clowes	Tara Nicole Falcone	Peter Van Russel Hicks	Christine Lain	Susan Mills	Kendrick Miller	Frederick W. Smith	Valdi Weiderpass		The Heinz Endowments	The Wyss Foundation	
John E. Cogan	Eli Fenichel	Marquita Hill	Elizabeth Monroe	Echo Mitchell	John Mills	Jessica Smith	Darryl Weiser		Heising-Simons Foundation		
Matthew R. Cohler	Howell L. Ferguson	Adelaide F. Hixon ♦	John R. Monsky	Devorah Mittelman	Susan Mills	Mark D. Smith	James S. Welch		Highstead Foundation		
Roger Cohn	Benjamin L. Fine	Bettina Hobson	Walter Montalvo	Paul Moderacki	Echo Mitchell	Sean Smith	Marianne Welch				
Joseph Colaccino	Fabian Fischmach	Peter Hodum	Twila Moon	Elizabeth Monroe	Devorah Mittelman	Barbara Smucker	Susan Wells				
Kenneth Colburn	Sarah Fischell	Don Hofstrand	Garrett M. Moran	Lisa Renstrom	Paul Moderacki	Nicholas D. Snow	Paul Wermer				
Catherine Cole	John S. Fitch	Holly Hogan	Mary P. Moran	Dan Reyman	Elizabeth Monroe	Eric Snyder	Cathy West				
Wim Combrink	Michael A. Fitzpatrick	Jonathan Horwitz	Anna Mudd	Jai Rho	John R. Monsky	Jan Snyder	Rick West				
Liza Comita	Dan Fleet	Charles Howland	Alice Mulder	James Rhodes	Walter Montalvo	Katie Lindgren Soroye	Frederick T.				
James L. Connaughton	Malcolm M. Fleming	Robert Hudson	Daniel Mullen	David B. Rich	Twila Moon	Catherine Soudoplatoff	Weyerhaeuser ♦				
James Connolly	Kristin L. Floyd	Carlton Huber	Peter Mulshine	Joe Richardson	Garrett M. Moran	Susan L. Richardson	Ted Whatley				
Diana Conway	Ralph Folsom	Ronald R. Huffman	Chris Murray	Alice Mulder	Mary P. Moran	Stephanie S. Spaulding	Kate Wheeler				
Michael M. Conway	Jennifer Foster	Jacqueline C. Hullar	Albert P. Neilson ♦	Daniel Mullen	Anna Mudd	Stephanie K. Speirs	Sarah F. Whitener				
Amy Cooke	Stephenie Frederick	John P. Hullar		Peter Mulshine	Alice Mulder	J. Gustave Speth	Donna Williams				
Lynn Cooley	Keoloha Freidenburg	Lani Hummel		Chris Murray	Fred Laplante	Alden Sprague	Stuart Williams				
	Stephen C. Freidheim	C. Powell Hutton		Richard H. Lawrence	John Largay	Alice Stanback	Gunther Willinger				

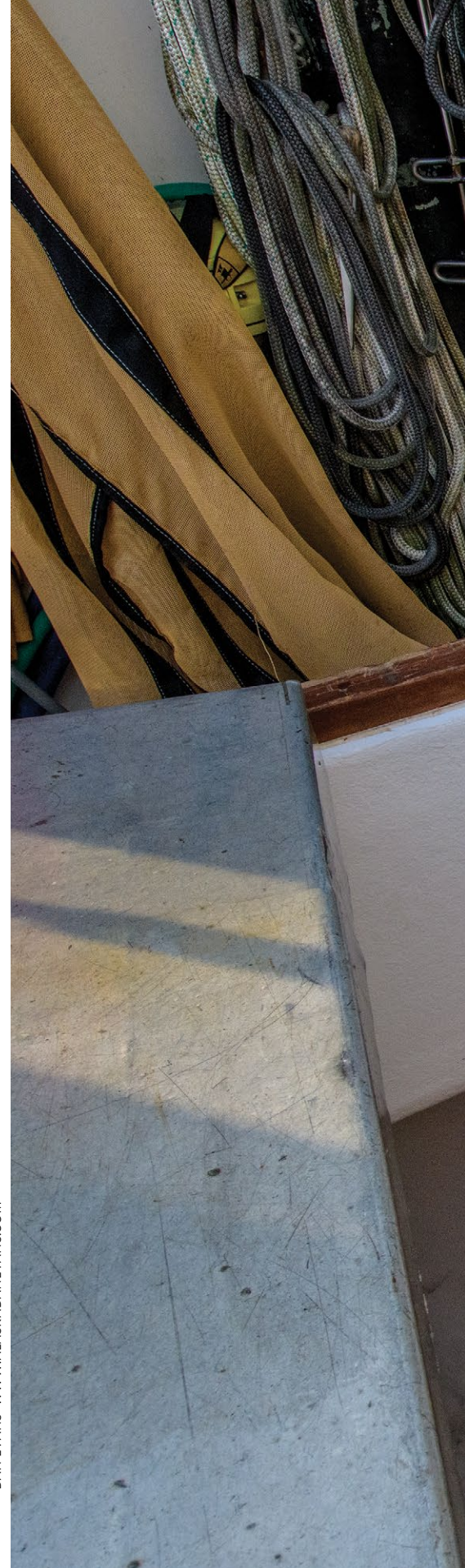
*Although we have made every effort to recognize everyone who has generously contributed in support of the students and programs at YSE, we apologize if any name has been inadvertently omitted. Please let us know if an error has been made, or if you would like your name to be displayed differently in next year's Honor Roll or other correspondence from the School.*

# Yale SCHOOL OF THE ENVIRONMENT

P.O. Box 208354  
195 Prospect Street  
New Haven, CT 06511  
  
203-432-5100  
deansoffice.yse@yale.edu

**ADDRESS SERVICE REQUESTED**

Non Profit Org.  
U.S. Postage  
**PAID**  
New Haven, CT  
Permit No. 526



Printed on 100% post-consumer recycled paper using electricity for printing derived from wind power by J.S. McCarthy Printer.

DAN EVANS WWW.ALASKADANEVANS.COM